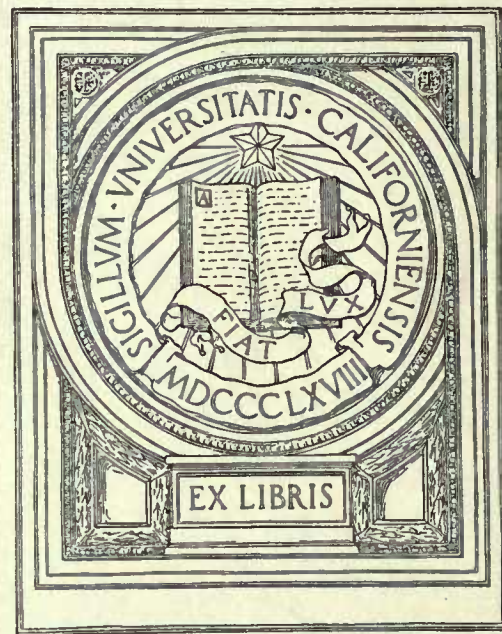


Views from the Mosquito  
RESERVATION  
NICARAGUA  
C.A.



BANCROFT LIBRARY

# VIEWS

FROM THE

## MOSQUITO RESERVATION

Nicaragua C. A.

by F. FELDBALLE

//

F1529

M9F4



Chief George William Albert Hendy  
died 1888.



The present Chief  
Robert Henry Clarence.



Chief William Henry Clarence  
died 1879.



Chief Jonathan Charles Frederik  
died 1880.

1438  
1879  
1880  
1888

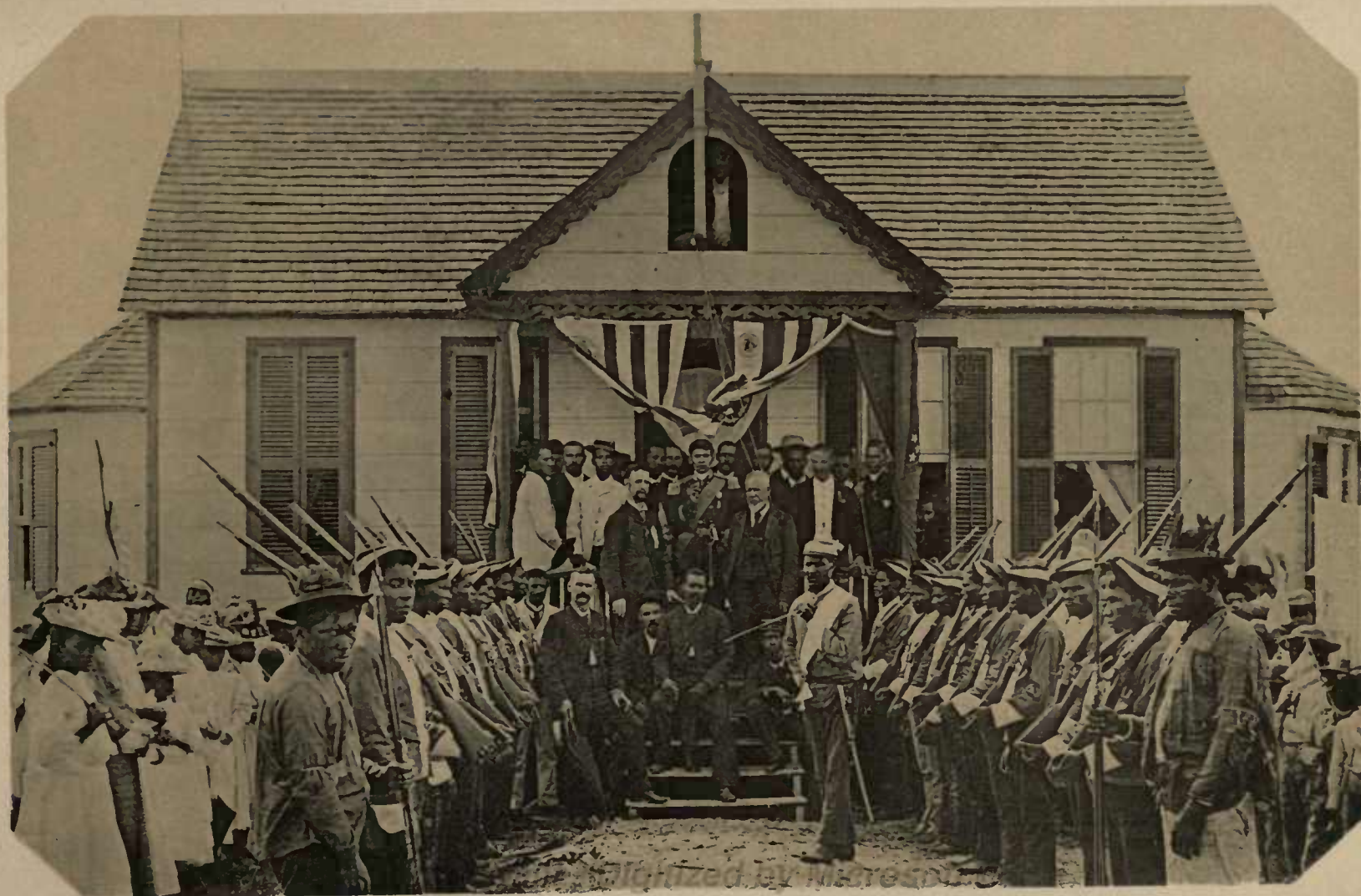




The present Chief and his Cabinet.







Celebration of the present Chief's 21<sup>st</sup> birth-day at his residence Pearl City.

INTERNET ARCHIVE

Digitized for Microsoft Corporation  
by the Internet Archive in 2007.

From University of California Libraries.

May be used for non-commercial, personal, research,  
or educational purposes, or any fair use.

May not be indexed in a commercial service.



General View of Bluefields.

*Univ Calif - Digitized by Microsoft®*



Univ Calif - Digitized by Microsoft®

View of Bluefields from the Lagoon.





*Univ Calif - Digitized by Microsoft®*  
View of Bluefields with the River boat „Hendy“.







Only Call - Digitized by Microsoft®

Part of King Street, Bluefields.





Part of King Street, Bluefields.





Univ Calif - Digitized by Microsoft®  
Part of King Street, Bluefields.





Clarence Street, Bluefields.







*Only Call - Digitized by Microsoft*  
The Moravian Mission Buildings and warf, Bluefields.





*Univ Calif - Digitized by Microsoft ®*  
Moravian Missionaries in the Mos. Reservation including Bishop Romig.





*Univ Calif - Digitized by Microsoft®*  
Bread fruit tree in Bluefields.





*Univ Calif - Digitized by Microfilm*

Banana suckers Bluefields River.







*Univ Calif - Digitized by Microsoft®*  
Washing at the Creek Bluefields.





Univ Calif - Digitized by Microsoft®  
Group of Sumu Indians.

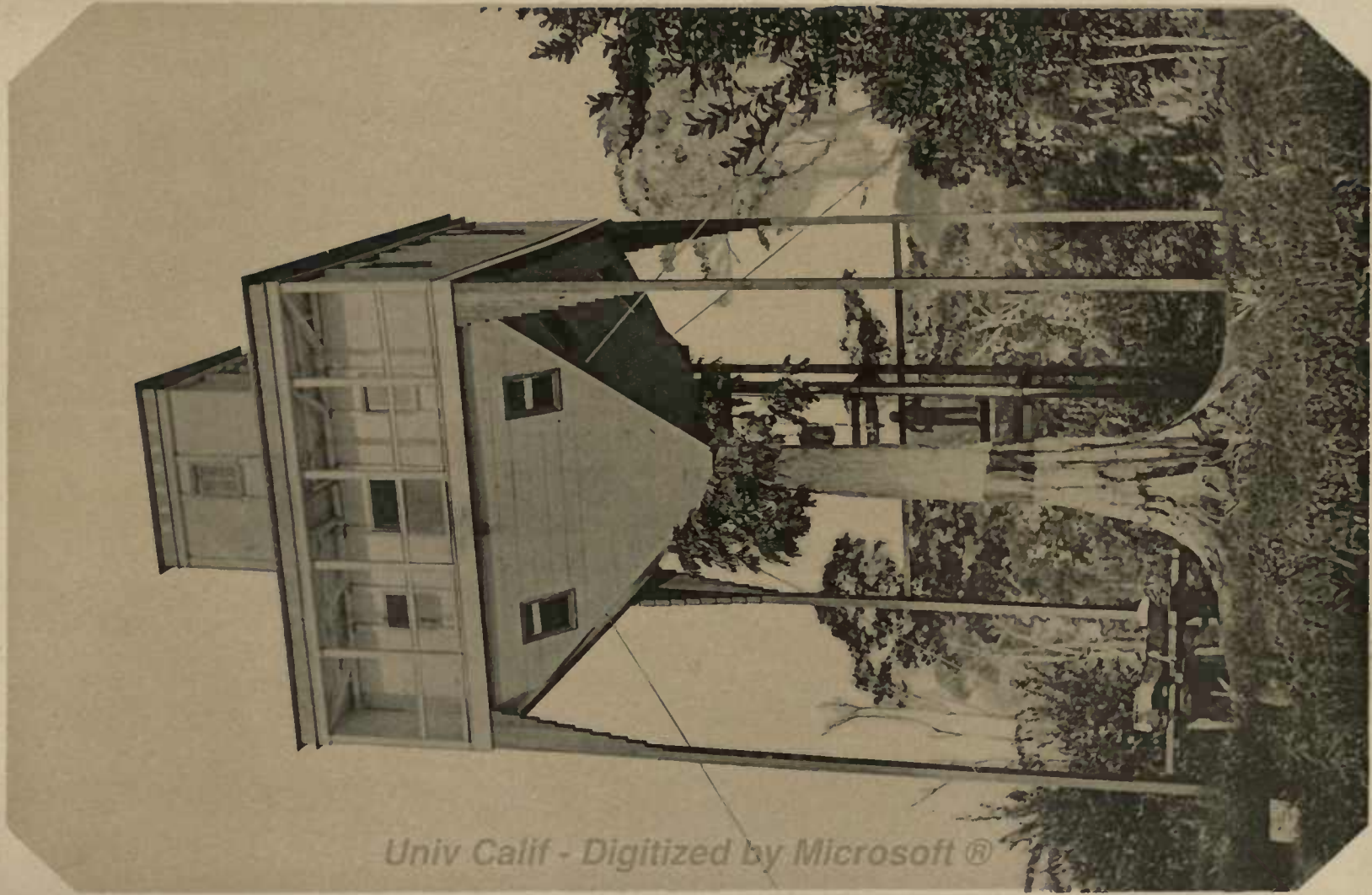




*Univ. Calif. - Digitized by Microsoft®*

Plantation "Repose" Rama River.





Plantation "Repose" Rama River;  
House built on Ebon tree 70 feet high.







*Univ Calif - Digitized by Microsoft®*

Bluefields Bluff and Harbor.

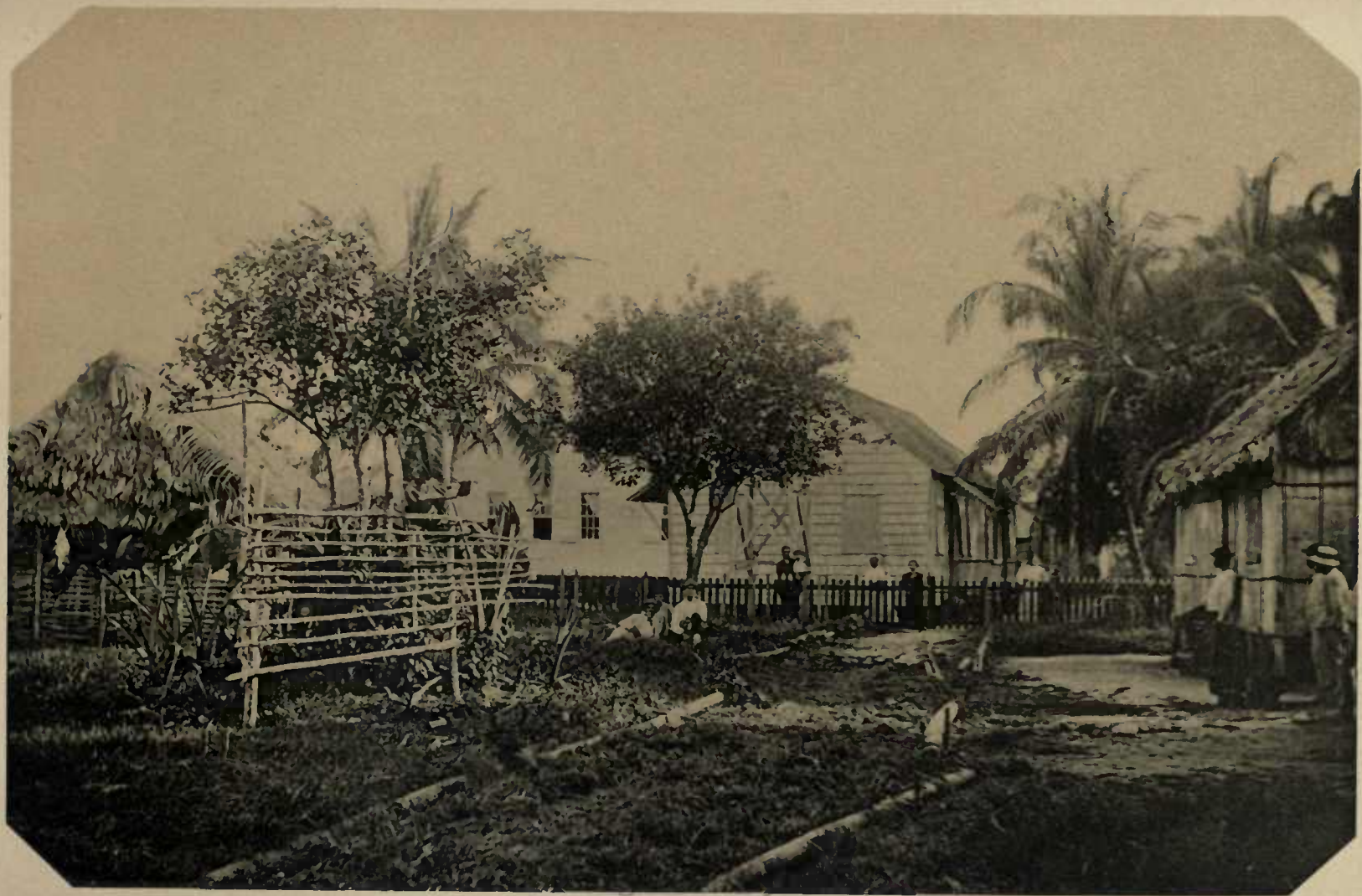




Univ. Calif. Digitized by Microsoft®

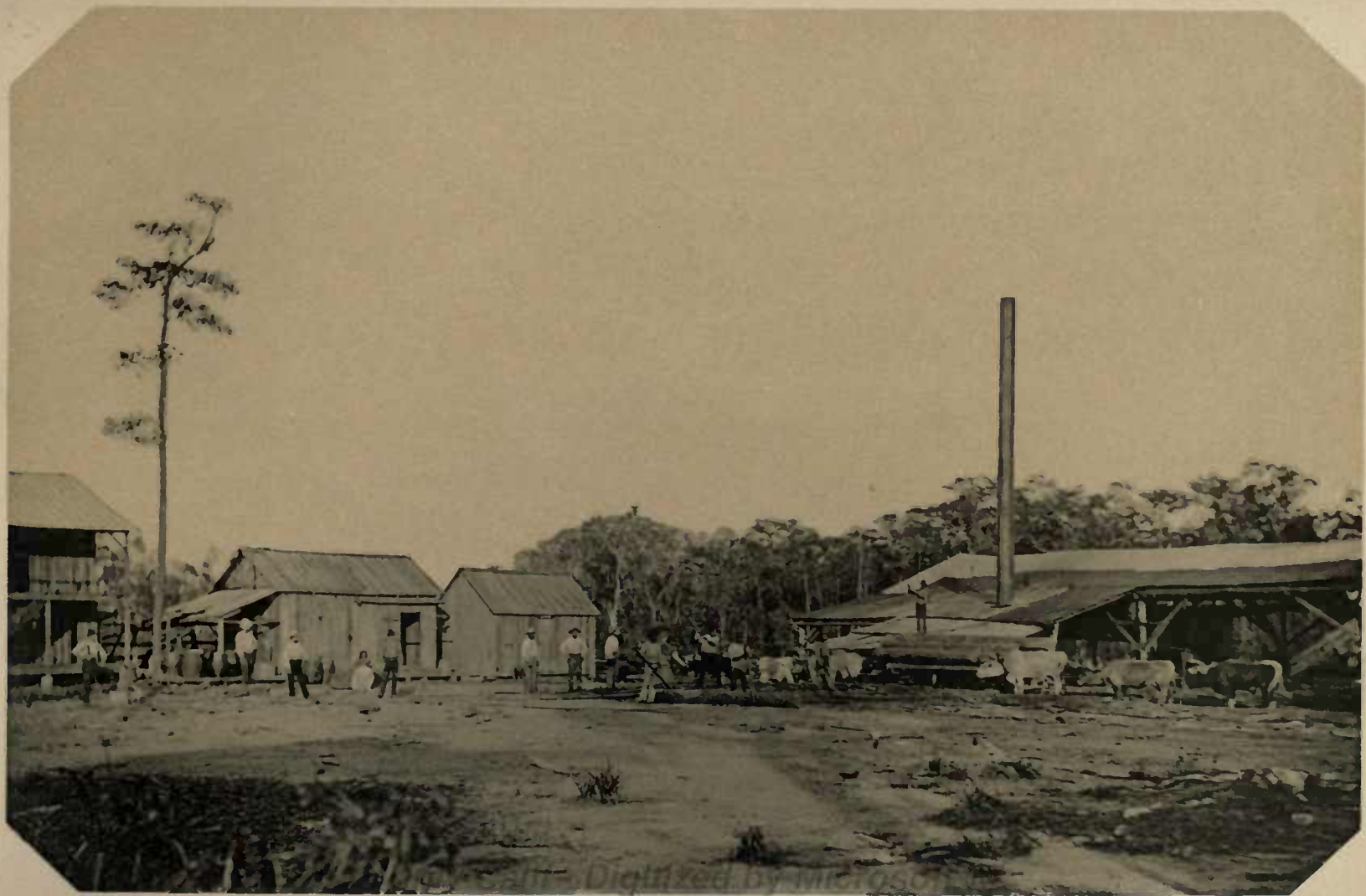
Rama Cay with Missionary Station.





View of Karata with Missionary Station.





The Saw Mill on the Wa Wa River.







Univ Cam - Digitized by Microsoft ©

Dumping Ground in one of Geo. D. Emery's Mahogany Camps Wa Wa River.





Hawling logs in one of Geo. D. Emery's Mahogany Camps.





Labourers in one of Geo. D. Emery's Mahogany Camps.





*Univ Calif - Digitized by Microsoft ®*

View from the Bluefields Lagoon.















