
THE POSTMARKS OF NICARAGUA

from the prestamp era through circa 1920

compiled by Kilian E. Nathan and based on his collections

Postmarks 1905 and Later

double circle with coat of arms but no date

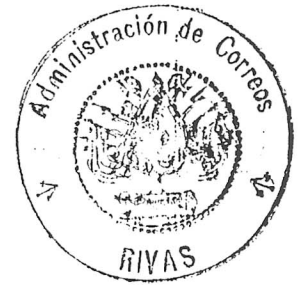
“Administracion de Correos / RIVAS”

oval with inside oval

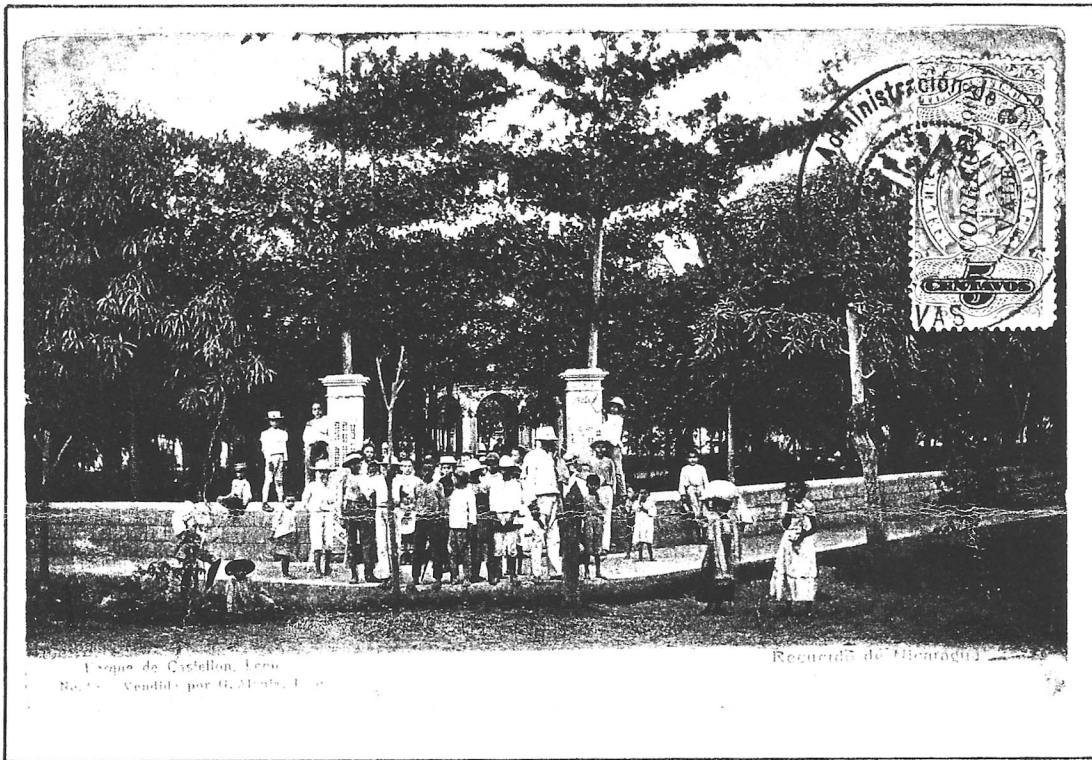
“Administracion de Correos / CHICHIGALPA”

N I C A R A G U A

1 9 0 8



Colored picture postcard from RIVAS to VERDUN, Meuse / France



Plaza de Castellón, León
No. 1. - Vendido por G. Méndez, León

Reguero de Nicaragua

Tarjeta Postal

Nicaragua



Jauada 19/10 08

Autre vue d'un des coins
de León avec cette différence
que les gens ne sont tout
dernement pas arrivés nous
qu'il en ont l'air sur
cette vue

Sauvons pour tous

[Signature]

[Signature]

Suzanne Labriebourg

Rue Hazel

France Verdun

Meuse

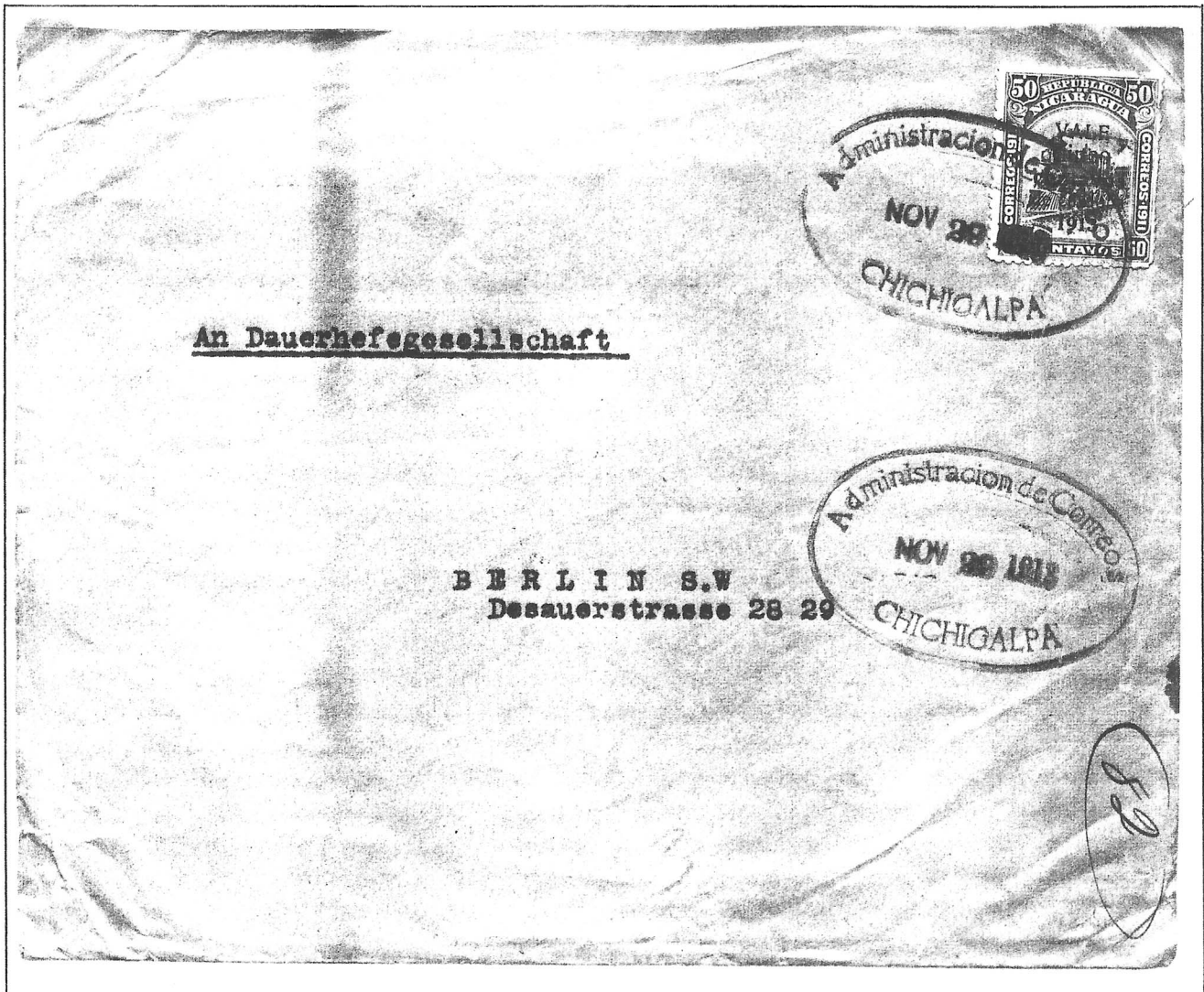
N I C A R A G U A

1913

"ZELAYA" issue of 1912 surcharged in BLACK:

V A L E
cinco
centavos
de córdoba
1913

Cover from CHICHIGALPA to Berlin, Germany



Cancelled Chichigalpa November 29, 1913
Transit postmark Corinto November 30, 1913