

LUCANIDAE DE LAOS

***Nigidius crassus* BOMANS, 1993.**

Bomans, 1993:331.

Laos : Ban Van Heua*, Pakse*, Phou K. Khouai*.

***Nigidius laoticus* DE LISLE, 1964.**

De Lisle, 1964:48.

Laos.

***Nigidius punctiger* BOMANS, 1993.**

Bomans, 1993:329.

Laos : Tonpheng*.

***Nigidius rondoni* BOMANS, 1993.**

Bomans, 1993:330.

Laos : Ban Van Heua*, Vientiane*.

***Figulus elateroides* BOMANS, 1986.**

= *Figulus sp.* Bomans, 1967, 1968, 1970.

Bomans, 1967:317-323; Bomans, 1968:31-42; Bomans, 1970:232; Bomans, 1986:10, pl.1; Maes, 1992:37.

Laos : Vientiane*, Khong Sedone*.

***Figulus laoticus* BOMANS, 1986.**

Bomans, 1986:11, pl.2; Bomans, 1991:145; Maes, 1992:38; Mizunuma & Nagai, 1994:299, pl. 136.

Thailand : Chiang Mai (Chiang Mai--18°50N-98°57E, Mt. Doi Pui);

Laos : Pakse*;

Vietnam : Cochinchina*.

***Cardanus reconditus* BOMANS, 1986 [*Diasomus*].**

Bomans, 1986:292; Maes, 1992:42.

Laos : Vientiane*.

***Lucanus (Lucanus) angusticornis* (Boileau in litt.) DIDIER, 1925.**

Didier, 1925:219; Didier, 1926:144; Didier & Séguy, 1953:81; Benesh, 1960:131; Lacroix, 1972:50; Kurosawa, 1978:143; Sakaino, 1981:23; Maes, 1992:15; Kawano, 1994:9; Mizunuma & Nagai, 1994:216, pl.15; Kawano, 1997:454; Kawano, 1997:25.

Laos : Xieng-Khouang*;

Vietnam : Tonkin (Tam Dao at NE Hanoi, Tam Dao near Vinh Yen).

***Lucanus (Lucanus) formosus* (BOILEAU in litt.) DIDIER, 1925.**

Didier, 1925:220; Didier, 1926:153; Didier & Séguy, 1953:81; Benesh, 1960:141; Kurosawa, 1978:143; Bomans, 1989:4; Maes, 1992:17.

China : Yunnan (Pe-Yen-Tsing), Fujian (Kuatun);

Laos : Xieng Khouang*.

***Lucanus (Lucanus) laminifer ssp. vitalisi* POUILLAUE, 1913.**

Laos;

Cambodge;

Vietnam : Tonkin* (Chapa, Lao-Kay, Ha-lang, Lao Kay--Hoang Lien So'n, Sapa-Hoang Lien So'n).

***Hexarthrius parryi ssp. parryi* HOPE, 1842.**

India : Sikkim, Assam (Cachar, Sibsagar), Meghalaya (Shillong, Khasi Hills), Nagaland (Kohima);

Bangladesh : Sylhet*;

Myanmar = Burma;

Thailand;

Laos : Sayabouri;

Cambodia : Kep sur Mer;

Vietnam : Tonkin.

***Neolucanus brevis ssp. rondoni* LACROIX, 1972.**

Thailand : Chiang Mai (Nan);

Laos : Tonpheng*, Ban Van Heua, Phou Khao Khouei (Ritaville* 40 km NE Vientiane), Phou Soai Dao.

***Neolucanus donckieri* DIDIER, 1926.**

Didier, 1926:211; Didier, 1929:85; Benesh, 1960:123; Lacroix, 1988:6; Maes, 1992:28; Mizunuma & Nagai, 1994:311, pl.149.

China : Yunnan (Yunnan-Sen*);

Laos*.

***Neolucanus giganteus* POUILLAUE, 1914.**

Pouillaude, 1914:37; Benesh, 1960:124; Mizunuma, 1985:15-16, Maes, 1992:28; Mizunuma & Nagai, 1994:223, pl. 23; Kawano, 1997:454.

S. China;

Thailand : Chiang Mai (Chiang Mai--18°50N-98°57E, Nan);

Laos : Samneua;

Vietnam : Tonkin (Dong-Van*, Tam Dao near Vinh Yen).

***Neolucanus guiardi* DIDIER, 1926.**

Didier, 1926:212; Didier, 1929:104; Benesh, 1960:124; Maes, 1992:28; Mizunuma & Nagai, 1994:220, 311, pl.149.

Laos : Phong-Salg*, Xieng-Khouang*.

***Neolucanus latus* BOILEAU, 1902 [*Calcodes*].**

= *Neolucanus brevis* BOILEAU 1899 (female) [Birmanie : Catcin Cauri].

= *Neolucanus apricans* MOLLENKAMP 1912 [Naga Hills; Brahmaputra].

Boileau, 1899:197; Boileau, 1902:204; Mollenkamp, 1912:302; Arrow, 1943:135; Arrow, 1950:203, pl.21; Benesh, 1960:124; Bomans, 1991:147; Maes, 1992:29; Mizunuma & Nagai, 1994:220, pl. 21.

India : Assam (Brahmaputra), Nagaland (Naga Hills, Kohima);

Myanmar = Burma : Kachin State (Kachin Kauri), Rangoon State (Rangoon--16°48N-96°08E), Karen State (Carin Cheba*, Cheba-Karen Hills), ? (Thandaung);

Thailand : Chiang Mai (Chiang Mai--18°50N-98°57E, Mt. Doi Inthanon--18°26N-98°17E), Tak (Maesot), Loei (Lomkao near Lom Sak, Dansai--Loei near Lom Sak), Petchaburi (Khao Khor);

Laos.

***Odontolabis cuvera* ssp. *sinensis* (WESTWOOD, 1848) [*Lucanus*, *Calcodes*].**

Myanmar = Burma : S. Shan State (Loimwe);

China* : Shanghai (Shanghai), Sichuan (Mt. Simiang Shan), Hunan (Wuling Mts.), N. Yunnan (Kut-Sin-Fou), Guizhou = Kouy-Tcheou, Fujian (Mt. Wuyi Shan, Kuatun), Hong Kong, Guangdong (Guangzhou = Canton), ? (Lilong), Hainan I. (Mt. Wuzhi Shan);

Thailand = Siam : Chiang Mai (Chiang Mai--18°50N-98°57E);

Laos : Xieng-Khouang, P.K. Khouai (Vientiane), Ban Van Heua, Thonpheng, Ban Sam Thong.

***Odontolabis cuvera* ssp. *fallaciosa* BOILEAU, 1901 [*fallaciosus*].**

= *Odontolabis fruhstorferi* MEYER-DARCIS 1901 [Tonkin].

= *Odontolabis salvazae* POUILLAUDE 1913 [Tonkin].

China : Guangxi;

Thailand : Lampang (Muang Pan);

Laos : Samneua;

N. Vietnam : Annam, Tonkin (Manson Mts.*, Ngan-son, Vietteri, Tam Dao near Vinh Yen, Mt. Manson near Sapa), Dalat--S. Vietnam.

***Odontolabis cuvera* ssp. *mouhoti* PARRY, 1864 [*Calcodes*] [*mouhotii*].**

Myanmar = Burma : Karen State (Kawkareik--Dawna Range), Tenasserim State (Tavoy--Mintha Sakan);

Thailand = Siam* : Chiang Mai (Chiang Mai--18°50N-98°57E), Nakhon Ratchasima (Nakhon Ratchasima--15°01N-102°04E), Chantaburi (Khao Soi Dao);

Cambodia*;

Laos.

Note : For Mizunuma & Nagai (1994) *O. mouhoti* is a good species with *O. elegans* as a ssp. Possibly there are both good species, in some localities, there are both presents with *O. fallaciosus*, which can also be a good species.

***Odontolabis leuthneri* BOILEAU, 1897.**

= *Odontolabis leuthneri* var. *brunnea* NAGEL 1926 [Sarawak : Mt. Murud].

Boileau, 1897:147; Von Rothenburg, 1900:92; Mollenkamp, 1904:341; Nagel, 1926:295, pl.12; Nagel, 1927:147; Didier & Séguy, 1952:pl.55; Benesh, 1960:118; De Lisle, 1976:276; Lacroix, 1984:pl.94, pl.21; Kikuta, 1986:135; Nagai, 1986:2, 6, 9; Maes, 1992:26; Kawano, 1994:9; Mizunuma & Nagai, 1994:223, pl. 24.

?Laos;

?Vietnam : Tonkin;

Borneo : Sarawak (Mt. Murud, Kalabit Country), Sabah (Mt. Kinabalu*, Headquarters--Mt. Kinabalu, Crocker Range).

Odontolabis platynota ssp. platynota (HOPE & WESTWOOD, 1845) [*Lucanus*, *Calcodes*] [*platynotus*, *platinota*] [East India].

= *Odontolabis emarginata* (REICHE) SAUNDERS 1854 [*emarginatus*] [China].

= *Odontolabis evansii* WESTWOOD 1855 [China].

? India : Assam;

N. Myanmar = Burma : Karen State (Karen Hills--Cheba);

China : Shanghai (Shanghai), Sichuan (Miyi), Hunan (Wuling Mts.), Yunnan, Guizhou, Zhejiang, Fujian (Kuatun), Hong Kong;

Laos : Xieng-Khouang, Parkading, Ban Van Heua, P.K. Khouei, Tonpheng.

Odontolabis siva ssp. siva (HOPE & WESTWOOD, 1845) [*Lucanus*, *Calcodes*].

= *Odontolabis bellicosus* REICHE (nec CASTELNAU) 1853.

= *Odontolabis carinatus* PARRY (nec LINNAEUS) 1864.

= *Neolucanus alces var. portax* DIDIER & SEGUY 1952 [Inde].

= *Odontolabis parryi ab. mingianus* DIDIER & SEGUY 1953 [Sikkim].

India : Sikkim, West Bengal (Darjeeling, Rungeer Valley, Mangpu, Gopaldhara, Rungbong Valley, Kurseong, Duars-Buxa), Arunachal Pradesh (Namdapha, Miao), Assam (Sibsagar), Meghalaya (Shillong, Khasi Hills*), Nagaland (Patkai Hills); Bangladesh : Sylhet*, Maini Mukh, Chittagong Hill;

Nepal;

Bhutan : Pedong;

Myanmar = Burma : Shan State (Muong Yoo);

China : Hunan (Wuling Mts.), Yunnan, Fujian (Kuatun), Hainan I.;

Thailand : Chiang Rai (Mae Jan, Wiangpapao), Chiang Mai (Mt. Doi Pui, Samoeng, Mt. Doi Saket), Tak (Umphang), Mukdaharn (Phu Pahn), Nakhon Nayok (Wang ta Krai), Petchaburi (Lomgao);

Laos : P.K.Khouai, Vientiane, Parkading, Pakse, Houei Kong, Muong Soui, Ban Van Heua, Thonpheng, Sayabouri;

Vietnam : Tonkin (Tam Dao near Vinh Yen), Annam;

Malaya = Malacca.

Prosopocoilus (Cladognathus) girafa ssp. girafa (OLIVIER, 1789)
[*Lucanus, Macrognathus, Cladognathus, Prosopocoelus*] [*giraffa, giraffia*].

= *Lucanus brahminus* HOPE 1842 [Sylhet].

= *Cladognathus giraffoides* (HOPE) BURMEISTER 1847 [*Prosopocoilus*]
(*nomen nudum*) [Siam].

= *Cladognathus whithillii* (HOPE) PARRY 1864 (*nomen nudum*) [Bengal].

= *Cladognathus bouvieri* DIDIER 1935 [Assam].

India : Uttar Pradesh (Dehra Dun), Sikkim, West Bengal (Darjeeling, Singla, Pashok), Assam (Sibsagar), Meghalaya (Shillong, Khasi Hills, Cherrapunji);

Nepal*;

Bhutan;

Bangladesh : Sylhet, Kaptai, Chittagong Hill;

Myanmar = Burma : Shan State (Muang Yoo), Tenasserim State;

Andaman Is. : South Andaman I. (Port Blair);

China : Hunan (Wuling Mts.); Iwagi Is.;

Taiwan;

Thailand = Siam : Chiang Rai (Wiangpapao), Chiang Mai (Samoeng), Tak (Umphang), Mukdaharn (Phu Pahn), Saraburi (Khao Yai--14°30N, Nakhon Noyok);

Laos : Pakse, Ban Houei Sai, Phontiou, Khong Sedone, Sayabouri, Wapi;

Vietnam : Tonkin;

Malaya : Pahang (Cameron Highlands).

***Prosopocoilus (Prosopocoilus) aquilus* DIDIER, 1927.**

Didier, 1927:220; Benesh, 1960:63; De Lisle & Chujo, 1964:181; Maes, 1990:7; Bomans, 1991:148; Maes, 1992:76.

Thailand : Chiang Mai (Chiang Mai--18°50N-98°57E), Lamphun (Mae Tha);

Laos;

Cambodia*;

Vietnam: Tonkin*.

***Prosopocoilus (Prosopocoilus) bidentatus* (BOMANS, 1978)
[*Prosopocoelus*].**

Bomans, 1970:228; Bomans, 1978:162; Lacroix, 1981:66; Maes, 1990:7; Maes, 1992:77; Mizunuma & Nagai, 1994:24, 248, pl. 66.

Laos : Ban Van Heua*, Tonpheng*, Thakek*, Muong Soui*, Paklay*, Vientiane*, Parkading*, P.K. Khouei*.

***Prosopocoilus (Prosopocoilus) buddha ssp. approximatus* (PARRY, 1864).**

Cladognathus approximatus PARRY, 1864 [*Prosopocoelus*].

Lucanus thibeticus WESTWOOD, 1855 [Thibet].

Prosopocoelus cornuatus DIDIER, 1927 [*Prosopocoilus*] [Laos : Keng-Kien].

China : Xizang = Thibet;

Thailand : Chiang Mai (Mt. Doi Pui, Chiang Mai--18°50N-98°57E), Lamphun (Mae Tha);

Laos* : Keng-Kien, P.K. Khouai--Vientiane, Phontiou, Louang Prabang, Parkading, Savannakhet, Khong Sedone, Pakse, Sayabourj;

Cambodia;

Vietnam : Tonkin (Tam Dao near Vinh Yen), Annam, Cochinchina*.

Note : It seems that the correct name of this ssp. would be *thibeticus*.

Prosopocoilus (Prosopocoilus) bulbosus ssp. crassimaxillaris (BOMANS, 1967) [Prosopocoelus].

Laos : Ban Van Heua*, Thonpheng*, P.K. Khouei*.

Prosopocoilus (Prosopocoilus) cardoni (DIDIER, 1927) [Prosopocoelus].

= *Dorcus buddha* ARROW (nec HOPE) 1950.

Didier, 1927:220; Didier, 1929:119; Arrow, 1943:138; Arrow, 1950:141, pl.15; Benesh, 1953:27; Didier & Séguy, 1953:111; Benesh, 1960:65; De Lisle & Chujo, 1964:181; Bomans, 1970:229; Sakaino, 1981:23; Maes, 1990:7; Bomans, 1991: 148; Maes, 1992:77.

India : Bihar (Chota-Nagpur--Palkot*), Sikkim, West Bengal (Darjeeling, Kurseong*);

Thailand : Chiang Mai (Chiang Mai--18°50N-98°57E), Lamphu (Mae Tha);

Laos : P.K. Khouei;

Vietnam : Tonkin.

Prosopocoilus (Prosopocoilus) cilipes (THOMSON, 1862) [Cladognathus, Prosopocoelus].

Thomson, 1862:416; Arrow, 1950:130, pl.10; Benesh, 1960:65; Lacroix, 1981:65; Maes, 1990:7; Maes, 1992:77; Bomans, 1993:401-405; Mizunuma & Nagai, 1994:24, 248, pl. 66.

India* : Assam (Lamin), Meghalaya (Khasi Hills, Shillong), Nagaland (Naga Hills), Manipur;

Bangladesh : Sylhet;

Laos : Pac Pha, Paksong, Houei Khong;

N. Vietnam : Tonkin (Lang Son), Annam (Vinh).

Prosopocoilus (Prosopocoilus) crenulidens (FAIRMAIRE, 1895)
[*Cladognathus, Prosopocoelus*].

= *Prosopocoelus tonkinensis* POUILLAUDE 1913 [Tonkin].

Fairmaire, 1895:173; Pouillaude, 1913:335; Didier, 1928:53; Benesh, 1960:66;
Bomans, 1970:229; Bomans, 1978:142, 165; Lacroix, 1981:66; Maes, 1990:7;
Maes, 1992:77; Mizunuma & Nagai, 1994:24, 248, pl. 66.

China : Guangxi = Kouangsi (Nanning), Hainan I.;

Thailand : Chiang Rai (Wiangpapao), Chiang Mai (Nan);

Laos : Thakek, Paklay, Parkading, P.K. Khouai--Vientiane, Vientiane, Ban
Houei Sai, Muong Soui, Ban Van Heua, Tonpheng;

N. Vietnam : Tonkin (Lang-Song*, Hoa-Binh, Chiem-Hoa, Tam Dao near Vinh
Yen).

Prosopocoilus (Prosopocoilus) elegans (BOMANS, 1978) [Prosopocoelus].

Bomans, 1970:229; Bomans, 1978:157; Maes, 1990:7; Maes, 1992:78.

China : Yunnan* (Nyenhangli*);

Laos : Ban Van Heua;

Vietnam : Tonkin (Hoa-Binh*, Backau*, Dong Van*), Annam*.

Prosopocoilus (Prosopocoilus) laoticus KRIESCHE, 1922.

Kriesche, 1922:122; Benesh, 1960:70; Maes, 1990:7; Maes, 1992:78.

Laos* .

Prosopocoilus (Prosopocoilus) perplexus (PARRY, 1862) [Cladognathus]
[Ind. Or.].

Parry, 1862:111; Parry, 1864:26; Parry, 1870:77; Arrow, 1950:120; Benesh,
1960:72; Maes, 1990:7; Maes, 1992:79.

? India : Assam;

?Laos;

?Vietnam : Tonkin.

***Prosopocoilus (Prosopocoilus) rondoni* (BOMANS & LACROIX, 1970)
[*Prosopocoelus*].**

Bomans & Lacroix, 1970:118; Bomans, 1978:159; Maes, 1990:7; Maes, 1992:80.

Laos : Phou Khao Khouei*--Vientiane, Paklay*, Thakek*, Ban Van Heua*.

***Prosopocoilus (Prosopocoilus) squamilateris ssp. asaetosus* BOMANS,
1994 [*Prosopocoelus*].**

Thailand : Chiang Rai (Chiang Rai), Chiang Mai (Mt. Doi Pui);

Laos : Pakse*, Wapi*.

***Prosopocoilus (Prosopocoilus) tarsalis ssp. christophei* (BOMANS, 1978)
[*Prosopocoelus*].**

Laos : Xieng Khouang;

Vietnam : Tonkin (Hoa-Binh*).

***Prosopocoilus (Prosopocoilus) weinreichi* (LACROIX, 1981)
[*Prosopocoelus*] [*weinreichi*].**

Lacroix, 1981:64; Maes, 1990:7; Maes, 1992:81.

Laos : Vientiane*.

***Prosopocoilus (Hoplitocranum) doris* KRIESSCHE, 1921.**

= *Metopodontus semifuscus* DIDIER 1929 [*Prosopocoelus*, *Prosopocoilus*]
[Tonkin : Hoa-Binh].

Kriesche, 1921:94; Didier, 1929:113; Didier & Séguy, 1953:112; Benesh, 1960:67, 75; Bomans, 1970:230; Lacroix, Ratti & Taroni, 1983:4; Maes, 1990:6; Maes, 1992:72, 73; Bomans, 1994:186, 188; Bomans, 1994:494; Mizunuma & Nagai, 1994:25-26, 28, 252, pl. 71.

Laos : Ban Van Heua;

N. Vietnam : Tonkin (Mauson Mts.*, Hoah-Binh, Tam Dao near Vinh Yen).

Prosopocoilus (Hoplitocranum) fulgens (DIDIER, 1927) [Metopodontus].

= *Metopodontus laterinus* DIDIER 1928 [Haut-Tonkin].

Didier, 1927:158; Didier, 1928:70; Didier, 1929:121; Arrow, 1950:165, pl. 15; Didier & Séguy, 1952:pl.79; Didier & Séguy, 1953:41, 103, 105, 107; Benesh, 1960:63, 68; Endrodi, 1968:51; Kurosawa, 1970:161, pl.2; Nakane, 1972:42; De Lisle, 1975:204; Maes, 1981:3-4; Sakaino, 1981:23, 25; Biswas & Chatterjee, 1985:182; Kawano, 1989:19; Maes, 1990:6, 9; Bomans, 1991:146; Maes, 1992:69-70; Kawano, 1992:12; Kawano, 1993:12; Bartolozzi & Sforzi, 1994:109, 114; Mizunuma & Nagai, 1994:25-26, 28, 252, 253-254, pl. 71, 73-74; Kawano, 1997:454.

Thailand : Chiang Mai (Mt. Doi Pui, Chiang Dao--19°15N), Nakhon Ratchasima (Nakhon Ratchasima--15°01N-102°04E);

Laos : Ban Sam Thong, Paksong, Muong Soui;

Vietnam : Tonkin (Ban-Samang*, Ban-Sion, Sapa--Hoang Lien So'h).

Prosopocoilus (Cyclotropus) inquinatus ssp. nigripes (BOILEAU, 1905) [Metopodontus, Prosopocoelus, Prosopocoilus].

Bangladesh;

Myanmar = Burma : Shan State (Muang Yoo);

China : Xizang (Manang-Kouang), Yunnan, Guangdong (Guangzhou = Canton);

Thailand = Siam : Chiang Mai (Fang, Sansai, Mt. Doi Pui, Chiang Dao--19°15N, Doi Suthep), Saraburi (Saraburi), Chanthaburi (Baonsong), Isthmus of Kra (Ranong--9°59N-98°36E), ? (Suratani, Hills between Thaungyin and Me Ping);

Laos : Luang Prabang, Tathem, Nag-Koi, Pakse, Thakek, P.K. Khouai--Vientiane, Parkading, Sayabouri, Thonpheng, Phontiou, Ban Houei Sai, Houei Khong, Khong Sedone, Ban Van Heua, Savannakhet;

Cambodia;

Vietnam* : Tonkin (Rivière Claire, Backan, Lang-Son), Cochinchina;

Malaya : Pahang (Cameron Highlands).

***Rhaetulus speciosus ssp. boileui* DIDIER, 1925.**

Rhaetulus speciosus ssp. boileui DIDIER, 1925 [Piahat, Nam Mia, Nam Mat, Nam Tiene].

Thailand;

Laos : Piahat*, Nam Mia*, Nam Mat*, Nam Tiene*, Sam Neua.

***Cyclommatus (Cyclommatinus) strigiceps ssp. vitalisi* POUILLAUDE, 1913.**

China: Sichuan = Sseu-tchouan (Ta-tch'ouan, Ta Tsien Lou - 31°10 N - 103°04 E, Siao Lou), Yunnan (Djo Kou La - 31°25 N - 102°58 E);

Thailand : Chiang Mai (Mt. Doi Pahompok near Fang);

Laos : B. Horcivai, Xieng Khouang;

N. Vietnam : Tonkin* (Chapa, Vien Poukha).

***Cyclommatus (Cyclommatinus) strigiceps ssp. laoticus* (BOMANS, 1970) [*Cyclommatinus*].**

Laos : Paksong*, Ban Van Heua*, Pakse.

***Dynodorcus antaeus* (HOPE, 1842).**

Dorcus antaeus HOPE, 1842:83 [*Eurytrachelus*, *Serrognaethus*] [*antaeus*].

Hope, 1843:364; Hope, 1845:74.

Lucanus scaritoides HOPE & WESTWOOD, 1845:20, 24 [*scaritides*] [Khasi Hills].

Vollenhoven, 1861:109; Parry, 1864:90; Parry, 1870:111.

Rhaetus parryi BOILEAU, 1902:49, pl. 2 [Loc. ?].

Heyne & Taschenberg, 1908:55

Dorcus mercurius (HOPE) BOILEAU, 1913:252.

Dorcus yaksha GRAVELY, 1915:422-423, pl. 29 [Darjjeling District : Kurseong; Dalfa Hills : Dikrang Valley].

Didier, 1928:47; Didier, 1931:183; Arrow, 1938:53; Arrow, 1950:86, pl.7; Didier & Séguy, 1953:143-144; Benesh, 1960:89; Endrodi, 1968:51.

Dorcus dispar DE LISLE, 1970:109 [Sumatra : Redelong--Atjeh] (Note : the figure of genitalia do not match with *antaeus*).

Kurosawa, 1970:160, pl.2; Endrodi, 1971:12; De Lisle, 1975:208; Weng-Yew Tung, 1983:46, pl.3; Misonne, 1986:31-32; Kawano, 1988:8; Maes, 1990:22; Bomans, 1991:145; Haitlinger, 1991:534; Maes, 1992:92; Kawano, 1992:12; Kawano, 1993:11; Bartolozzi & Sforzi, 1994:111, 114; Haitlinger, 1994:193; Kawano, 1994:11; Mizunuma & Nagai, 1994:265, pl. 93; Ikeda & Nishimura, 1995:19; Kawano, 1997:454, fig. 1, 5.

India : Himachal Pradesh (Mandi Distr.--Kara Forest near Hanogi--31°41N-77°07E), Uttar Pradesh = United Provinces (Naini Tal, Kumaon--W. Almora), Sikkim, West Bengal (Darjeeling, Kurseong, St. Mary's Forest--Kurseong, Dalfa Hills--Dikrang Valley), Assam*, Meghalaya (Khasi Hills, Cherrapunji);

Nepal : Khumbu, Thodung, Bhandar near Thodung;

Bhutan : Pedong, Puntsholing;

Myanmar = Burma : S. Shan State (Keng Dung), ? (Ruby Mines);

China : Yunnan;

Thailand = Siam : Chiang Rai (Wiangpapao, Mae Kajan, Chiang Rai), Chiang Mai (Mt. Doi Pui, Mt. Doi Pahompok near Fang, Mt. Doi Inthanon--18°26N-98°17E, Mt. Doi Saket, Maetaeng, Sankampaeng), Lampang (Jae Hom, Lampang--18°22N-99°28E), Petchaburi (Khao Khor);

Laos : Xieng-Khouang;

N. Vietnam : Tam Dao near Vinh Yen;

Taiwan;

Malaya : Perak (Taiping--4°51N-100°41E), Pahang (Cameron Highlands);

Borneo;

Sumatra : Aceh Prov. (Redelong);

Java.

Note : A specimen collected in Limoges, France (Misonne, 1986).

Natural enemies : Acarina : Canestriniidae : *Rugoniphela marloni*.

***Dynodorcus curvidens ssp. curvidens* (HOPE, 1840).**

Lucanus curvidens HOPE, 1840:78 [*Dorcus*, *Serrognathus*].

Dorcus dehaani HOPE, 1842 [*Dorcus*, *Serrognathus*] [Sylhet].

Dorcus klugii THOMSON, 1862 [*klugii*] [India].

Hope, 1841:299, 589; Hope, 1842:127; Hope, 1842:247; Hope, 1842:589; Hope, 1843:106; Hope & Westwood, 1845:22; Saunders, 1854:50, 51, 53, pl.3-4; Thomson, 1862:424-425; Parry, 1864:50, 89; Vollenhoven, 1865:153; Waterhouse, 1874:6; Gestro, 1881:323; Lewis, 1883:338; Boileau, 1898:401-432; Boileau, 1906:92; Van Roon, 1910:37; Boileau, 1913:253; Mollenkamp, 1913:20; Oberthur & Houlbert, 1914:155; Gravely, 1915:423; Kriesche, 1920:100; Didier, 1926:146; Didier, 1928:33-34, 41; Miwa, 1929:351; Nagel, 1930:93; Didier, 1931:182, 184; Didier, 1932:42; Miwa, 1933:362, pl.1; Benesh, 1936:9; Miwa, 1938:362, pl.1; Miwa, 1939:159, pl.283-284; Arrow, 1943:138; Arrow, 1950:88, pl.7; Didier & Séguy, 1952:230-231; Didier, 1953:145; Didier & Séguy, 1953:52-53, 145-146, 148; Inahara & Baba, 1959:9; Benesh, 1960:90-91, 96; Nomura, 1960:42; Nomura, 1963:107; De Lisle, 1967:529-531; De Lisle, 1974:51; Matsuka, 1981:2-3; Weng-Yew Tung, 1983:46, pl.3; Biswas & Chatterjee, 1985:182; Ichikawa, 1986:4-12; Kojima, 1986:16-21; Nakamura & Sugita, 1986:13-15; Yamaguchi, 1986:1-2; Kojima, 1987:21-25; Bomans, 1988:6; Isida & Fujioka, 1988:8-9; Kawano, 1988:22; Araya, 1989:7; Bomans, 1989:177-178; Kojima, 1989:3-7; Tsukawaki, 1989:19-23; Maes, 1990:22-23; Kawano, 1990:9-19; Araya, Obuchi & Ochi, 1991:23; Bomans, 1991:145; Kojima, 1991:11-18; Tsukawaki, 1991:19-21; Araya, Obuchi & Ochi, 1992:32; Kurosawa & Fujita, 1992:15-22; Maes, 1992:92-93; Yoshida, 1992:2-5; Kawano, 1993:9; Kawano, 1993:10-11; Sakaino, Yu & Chu, 1994:122; Bomans, 1994:489; Bartolozzi & Sforzi, 1994:114; Kawano, 1994:7, 11; Mizunuma, 1994:266; Mizunuma & Nagai, 1994:28-29, 265-267, 272, 320, pl. 94-97, 110; Ikeda & Nishimura, 1995:17-21; Araya, 1996:18, 21; Araya, 1996:16; Bartolozzi, 1996:132; Kawano, 1997:454.

India : Uttar Pradesh (Dehra Dun--Jaunsar), Sikkim, West Bengal (Darjeeling, Kurseong, Gopaldhara--Rungbong Valley), Arunachal Pradesh (Namdapha--Miao), Assam*, Meghalaya (Khasi Hills);

Nepal;

Bhutan : Pedong, Wangdi-Phodrang;

Bangladesh : Sylhet;

Myanmar = Burma : Tenasserim State, ? (Thandaung);

Thailand : Chiang Rai (Wiangpapao), Chiang Mai (Chiang Mai--18°50N-98°57E; Mt. Doi Inthanon--18°26N-98°17E, Mt. Doi Pui, Mt. Doi Saket, Om Goi, Samoeng), Lampang (Lampang--18°22N-99°28E), Tak (Umphang), Nakhon Ratchasima (Nakhon Ratchasima--15°01N-102°04E), ? (Mae Lanoi, Phitsanulok--16°49N-100°08E, Chiang Dao--19°15N, Mae Yai--20°00N);

Laos : Xieng-Khouang;

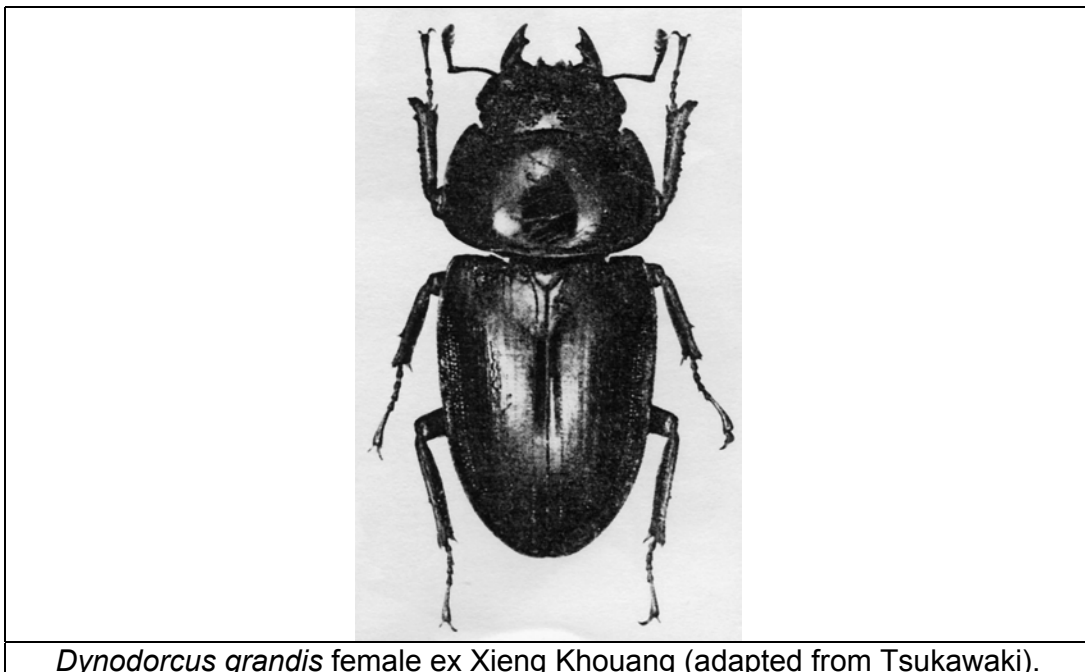
Vietnam : Tam Dao near Vinh Yen.

***Dynodorcus grandis ssp. grandis* (DIDIER, 1926) [*Dorcus*, *Serrognaethus*].**

Dorcus grandis DIDIER; Tsukawaki, 1998:76.

Laos : Xieng Khouang*

?China.



Bibliography.

TSUKAWAKI T. (1998) Notes on the genus *Dorcus* MacLeay, 1819 after the publication of "The Lucanid Beetles of the world" in 1994. *Gekkan-Mushi*, 328:76-84.

***Macrodercus (Pogonodorcus) pseudaxis* (DIDIER, 1926) [*Hemisodorcus*, *Pogonodorcus*, *Macrodercus*, *Dorcus*].**

Didier, 1926:178; Didier & Séguy, 1953:134; Séguy, 1954:189, 191; Benesh, 1960:78, 157; Bomans, 1970:230; Maes, 1990:18; Bomans, 1991:145; Maes, 1992:84; Ma, 1993:278; Mizunuma & Nagai, 1994:261, pl. 88.

Myanmar = Burma : Karen State (Dawna Range);

China : Hunan (Wuling Mts.);

Thailand : Chiang Rai (Wiangpapao, Maekajan), Chiang Mai (Mt. Doi Pui, Mt. Doi Inthanon--18°26N-98°17E, Chiang Mai--18°50N-98°57E, Maetaeng, Mt. Doi Suthep), Saraburi (Khao Yai--14°30N), Nakhon Ratchasima (Nakhon Ratchasima--15°01N-102°04E), Chantaburi (Khao Soi Dao), ? (Chonburi = Cholburi--13°24N-00°58E);

Laos : P.K. Khouai--Vientiane, Sayabouri, Houei Khong, Paksong, Ban Van Heua;

Cambodia : Cardamomes Mts.;

N. Vietnam : Tonkin (Ban Nam Mo*, Tuyen Quang*).

Adults on flowers of Apiaceae.

***Serrognathus (Serrognathus) platymelus ssp. platymelus* (SAUNDERS, 1854) [*Platyprosopus, Eurytrachellelus, Eurytrachellus*] [*platymerus*].**

= *Dorcus lateralis* SAUNDERS 1854 [lapsus for *lateralis* DEJEAN from Java].

= *Dorcus obscurus* SAUNDERS 1854 [China].

= *Dorcus marginalis* SAUNDERS 1854 [China].

= *Eurytrachelus titanus subsp. fafner* KRIESCHE 1920 Tonkin : Chiem-hoa, Mauson Mts.].

= *Eurytrachelus titanus subsp. hangul* KRIESCHE 1920 [Siao-Lou].

= *Eurytrachelus platymelus var. typhoniformis* NAGEL 1924 [*Serrognathus*] [Yunan].

= *Eurytrachelus prometheus* DIDIER 1925 [*Serrognathus*] [China : Kweitscheou].

= *Eurytrachelus hymir* KRIESCHE 1935 [*Serrognathus*] [China : Ssetschuan : Mts. near Kwanhsien].

= *Dorcus titanus ssp. westermanni* MIZUNUMA & NAGAI (not HOPE) 1994.

= *Dorcus titanus* BOISDUVAL; KAWANO 1997.

= *Serrognathus titanus platymelus f. dissimilis* BOMANS, DRUMONT & CAMMAERTS 1997 [China : Sichuan : You-Yang].

Myanmar = Burma : Kachin State (Putao District--Sumpra Bum), Shan State (Muang Yoo near Mong Yang);

China* : Canton, Sichuan = Szetchuan (Siao-lou-lou-chan, Kwanhsien, Mt. Kinfuschan, Mt. Yunling, Mt. Emei Shan, You-Yang), Hubei (Mt. Wufeng Shan), Hunan (Wuling Mts.), Yunnan (Jinghong, Nyenhangli), Zhejiang (Wenzhou, Mt. Siming Shan), Fujian = Fokien (At Chong, Kuatun), Guangdong = Kouantoung (Tscha-jiu-san, Fung-wan, Tong-kung-san, Yu-sa-tan), Hainan I.;

Thailand : Chiang Rai (Mae Jan, Chiang Kong), Chiang Mai (Mt. Doi Pui, Chiang Dao--19°15N, Chiang Mai--18°50N-98°57E, Samoeng, Sansai, Mt. Doi Saket, Mt. Doi Suthep, Maetaeng, Maesa, Fang), Tak (Umphang), Petchaburi (Khao Khor);

Laos: Thakek, Xieng-Khouang, Parkading, P.K. Khouai--Vientiane, Ban Houei Sai, Louang Prabang, Muong Soui, Ban Sam Thong, Ban Van Heua, Paksong, Sayabouri, Thonpheng, Samnea;

Vietnam : Annam, Tonkin (Mt. Mauson, Chiem-hoa, Sia-Lou), Banmethuot, Tam Dao near Vinh Yen.

Saproxylophagous.

Natural enemies : Acarina : Canestriniidae : *Cooremania wauensis*, *Sandrophela rodioni*.

Note : The synonyms given in this subspecies are taken from *titanus* in Benesh (1960) for the distribution area of *platymelus*. It's possible that various of them are in reality good species or subspecies.

***Serrognathus (Eurytrachelus) reichei ssp. reichei* (HOPE, 1842) [*Lucanus*, *Dorcus*, *Eurytrachellelus*].**

= *Dorcus blanchardi* HOPE 1842 [Khasi Hills].

= *Dorcus cognatus* HOPE 1842.

= *Dorcus punctilabris* HOPE 1842 [Khasi Hills].

= *Eurytrachelus castelnaudi* DEYROLLE 1865 [*Serrognathus*] [*castelnaui*, *castelnaudii*] [Bengal].

= *Dorcus glabripennis* WESTWOOD 1871 [Ind. Or.].

= *Eurytrachelus praecellens* MOLLENKAMP 1902 [Himalaya : Imaus Mts.].

= *Eurytrachelus cervulus* BOILEAU 1901 [*Serrognathus*] [Tonkin : Bao-Lac].

India : Sikkim, West Bengal (Darjeeling, Kurseong, Mangpu, Gopaldhara--Rungbong Valley, Mt. Imaus, Siliguri--Terai, Rangirum, Debrepani), Assam, Meghalaya (Khasi Hills*);

Nepal : Chalsa--Okaldunka, Dhunche, Bhaktapur Distr.--Helambu--Sundarikal-Kutumsang;

Bhutan : Pedong, Thimphu, Puntsholing, Wangdi-Phodrang, Chukka;

Bangladesh: Sylhet;

Myanmar = Burma : Kachin State (Kachin Kauri), ? (Ruby Mines);

China;

Thailand : Chiang Rai (Wiangpapao, Maekajan), Chiang Mai (Mt. Doi Pui, Samoeng, Mt. Doi Pahompok near Fang, Chiang Mai--18°50N-98°57E, Sansai, Fang, Sankampaeng, Mt. Doi Inthanon--18°26N-98°17E, Mt. Doi Suthep), Tak (Umphang), ? (Chumphon);

Laos : Paksong;

Vietnam : Tonkin (Bao-Lac).

Note : Bomans (1991) considers the ssp. *reichei* (Assam-Birmania-Thailand), *cervulus* (Yunnan-Tonkin-Birmania-Thailand) and *minax* (Thailand-Malaya).

***Telodorcus saiga* ssp. *saiga* (OLIVIER, 1789).**

Lucanus saiga OLIVIER, 1789:23-24, pl. 5 [Amérique méridionale] [*Dorcus*, *Eurytrachelus*, *Serrognathus*].

Lucanus elaphus HERBST, 1790:300, pl. 33.

Fabricius, 1794:452; Olivier (ed. Illiger), 1800:75; Fabricius, 1801:250; Olivier (ed. Sturm), 1802:7, pl.4; Voet, (1769)-1804:pl.30; Thunberg, 1806:189; Schonherr, 1817:325

Dorcus pygargus DEJEAN, 1837:193 [nomen nudum] [Java].

Lucanus kidang (REINWARDT) DEJEAN, 1837:193 [nomen nudum] [Java].

Dorcus paniscus (DE HAAN) DEJEAN, 1837:193 [nomen nudum] [Java].

Dorcus externepunctatus (DE HAAN) DEJEAN, 1837:193 [nomen nudum]
[Java].

Burmeister, 1847:387-388

Lucanus concolor BLANCHARD, 1853:139, pl. 9.

Note : Olivier (1789) refers *saiga* to Voet, Coleopt. Pars 1, tab. 30. fig. 5.

Reiche, 1853:79; Thomson, 1862:398, 424; Parry, 1864:6, 49; Gemminger & Harold, 1868:958; Parry, 1870:90; Gestro, 1881:319; Albers, 1883:224; Albers, 1890:88; Ritsema, 1890:28; Heyne & Taschenberg, 1908:55, pl.13; Berlese, 1910:269; Kriesche, 1920:99; Nagel, 1928:280; Didier, 1931:194; Nagel, 1933:220; Didier & Séguy, 1952:229; Didier & Séguy, 1952:pl.100; Didier & Séguy, 1953:51, 140; Benesh, 1960:83, 85; De Lisle, 1972; Maes, 1990:21; Bomans, 1991:137; Maes, 1992:91; Haitlinger, 1994:193.

Dorcus saiga (OLIVIER); Mizunuma & Nagai, 1994:272, pl. 110.

? Thailand;

? Laos : Song-kon;

Sumatra : ? (Deli);

Java : Tcibodas, Preanger, Buitenzorg, Palabuan;

Sulawesi = Celebes;

Lesser Sunda Is. : Tanimbar I.--7°31'S-131°30'E;

?New Guinea.

Natural enemies : Acarina : Canestriniidae : *Canestrinia microdisca*.

***Velutinodorcus velutinus* (THOMSON, 1862) [*Dorcus*, *Gnaphaloryx*].**

= *Gnaphaloryx cinereus* BOILEAU 1902.

Thomson, 1862:426; Boileau, 1902:321; Gravely, 1915:426; Kriesche, 1920:101; Miwa, 1933:366, pl.3; Arrow, 1935:109; Kriesche, 1935:174; Arrow, 1950:94, pl.12; Benesh, 1960:95; Nakane & Makino, 1985:19; Nakane, 1987:136; Bomans, 1991:145; Maes, 1992:95; Ma, 1993:279; Bartolozzi & Sforzi, 1994:114; Mizunuma & Nagai, 1994:274, 311, pl.113, 150; Araya, 1996:17.

China : Gansu = Kansou (Lihsien--Kialing-Flub), Hunan (Wuling Mts.);

India* : West Bengal (Pashok, Gopaldhara, Rungbong Valley, Darjeeling, Abor Country--Kobo);

Nepal;

Bhutan : Puntsholing, Pedong;

Myanmar = Burma : ? (Thandaung, Ruby Mines);

Thailand : Chiang Mai (Chiang Mai--18°50N-98°57E, Mt. Doi Pui, Mt. Pahompok near Fang, Mt. Doi Inthanon--18°26N-98°17E);

Laos : Paksong;

N. Vietnam : Tonkin (Mt. Mauson, Tam Dao near Vinh Yen).

Note : Araya (1996, p.17) use *Dorcus velsus*, it is perhaps a mis spelling of *Dorcus velutinus*.

***Aegus (Aegus) amplus* NAGAI, 1994.**

Aegus amplus NAGAI in MIZUNUMA & NAGAI, 1994:37-38, 287, pl. 125, fig. 546(1-5) [Chiang Mai].

Kawano, 1997:454.

Myanmar (= Burma) : Tenasserim Sate, 6-V-1992 (1 female PARATYPUS in col. S. Nagai, Japan).

Thailand : Chiang Rai : Wiangpapao, 9-IX-87 (1 male PARATYPUS in col. S. Nagai, Japan).

Thailand : Chiang Mai : Chiang Mai, 18°50N-98°57E, XI-1985 (male HOLOTYPUS, female ALLOTYPUS, 4 males PARATYPUS, 2 females PARATYPUS in col. S. Nagai, Japan).

Thailand : Chiang Mai : Chiang Mai, 18°50N-98°57E, VI-1986 (1 male PARATYPUS in col. S. Nagai, Japan).

Thailand : Chiang Mai : Chiang Mai, 18°50N-98°57E, XI-1986 (1 male PARATYPUS in col. T. Mizukami, Japan).

Thailand : Chiang Mai : Chiang Mai, 18°50N-98°57E, 13-VIII-1987 (1 male PARATYPUS in col. T. Mizunuma, Japan).

Thailand : Chiang Mai : Doi Inthanon, 18°26N-98°17E, II-1987 (2 males PARATYPUS in col. S. Nagai, Japan).

Thailand : Chiang Mai : Doi Inthanon, 18°26N-98°17E, IV-1987 (50 males PARATYPUS in col. S. Nagai, Japan).

Thailand : Chiang Mai : Doi Inthanon, 18°26N-98°17E, 3-II-1989 (1 male PARATYPUS in col. S. Nagai, Japan).

Thailand : Chiang Mai : Doi Inthanon, 18°26N-98°17E, 7-VIII-1989 (1 male PARATYPUS in col. M. Baba, Japan).

Thailand : Chiang Mai : Doi Inthanon, 18°26N-98°17E, 3/12-IX-1989 (2 males PARATYPUS in col. M. Baba, Japan).

Thailand : Chiang Mai : Mt. Doi Pui, 24/27-VI-1986 (2 females PARATYPUS in col. M. Baba, Japan).

Thailand : Chiang Mai : Mt. Doi Pui, 1200 m, VIII-1992, leg. S. Nagai (1 male PARATYPUS in col. S. Nagai, Japan).

Thailand : Chiang Mai : Phrao, 16-VII-1988 (1 male PARATYPUS in col. M. Baba, Japan).

NE. Laos : Samneua, 21-VI-1991 (1 female PARATYPUS in col. S. Nagai, Japan).

Bibliography.

MIZUNUMA T. & NAGAI S. (1994) The Lucanid Beetles of the World. Mushi-Sha's Iconographic Series of Insects, Ed. H. Fujita, Japan. Vol. I : 337 pp., 156 pls.

Aegus (Aegus) chelifera ssp. chelifera W.S. MACLEAY, 1819 [Australasia].

= *Aegus specularis* JAKOWLEW 1900 [Cochinchina].

India;

Bangladesh : Mankidoania, Sundarbans;

Myanmar = Burma : Shan State (Muong-Yoo), Rangoon State (Rangoon--16°48N-96°08E);

Thailand : Chiang Mai (Chiang Mai--18°50N-98°57E, Maetaeng, Maekajan, Mt. Doi Suthep, Mt. Doi Pui, Phrao, Maesa, Mt. Doi Inthanon--18°26N-98°17E, Samoeng, Fang), Tak (Umphang), Mukdaharn (Phu Pahn), Saraburi (Pak Chong), Nakhon Ratchasima (Sakaerat), Kanchanaburi (Sangkaburi--Khao Galak), ? (Weng Chin Phrae, Mt. Doi Step, Nikom Kam Soy, Bangkok--13°45N-100°29E, Bangklen);

Laos : Paklay, Parkading, Xieng Khouang, Thakek, P.K. Khouai--Vientiane, Paksong, Sayabouri, Houei Khong, Phontiou, Vientiane, Thonpheng, Pakse, Ban Houei Sai, Khong Sedone, Ban Van Heua, Wapi, Keng-Sadok;

Cambodia;

Vietnam : Tonkin, Cuc-Phong;

***Aegus (Aegus) coomani* DIDIER, 1926.**

Didier, 1926:18; Didier & Séguy, 1952:pl.109; Didier & Séguy, 1953:157; Benesh, 1960:101; Bomans, 1970:232; Maes, 1992:100; Bomans, 1992:190; Mizunuma & Nagai, 1994:290, 306, pl. 128, 141.

SW. Laos : P.K. Khouei--Vientiane, Ban Van Heua;

N. Vietnam : Tonkin (Hoa-Binh*).

***Aegus (Aegus) corniculatus* DIDIER, 1928.**

Didier, 1928:62; Benesh, 1960:101; Maes, 1992:100; Mizunuma & Nagai, 1994:306, pl. 141.

Laos : Xieng-Khouang*.

***Aegus (Aegus) eschscholtzi ssp. linealis* DIDIER, 1928.**

India : West Bengal (Darjeeling, Mangpu), Nagaland (Naga Hills);

Bhutan* : Pedong;

Thailand : Chiang Mai (Chiang Mai--18°50N-98°57E, Mt. Doi Suthep, Mt. Doi Pui),

N. Laos : Samneua.

***Aegus (Aegus) punctulatus* BOMANS, 1993.**

Bomans, 1993:200.

Laos : Ban Van Heua*;

Vietnam (Muong Om*).

***Aegus (Aegus) rondoni* BOMANS, 1971.**

Bomans, 1971:77; Maes, 1992:104; Mizunuma & Nagai, 1994:307, 316, pl. 143, 155.

Laos : Houei Khong-Mekong River*, Vientiane*.